

# Enabling Smart Lighting for Smart Cities

How Cheen Ng  
18 August 2017

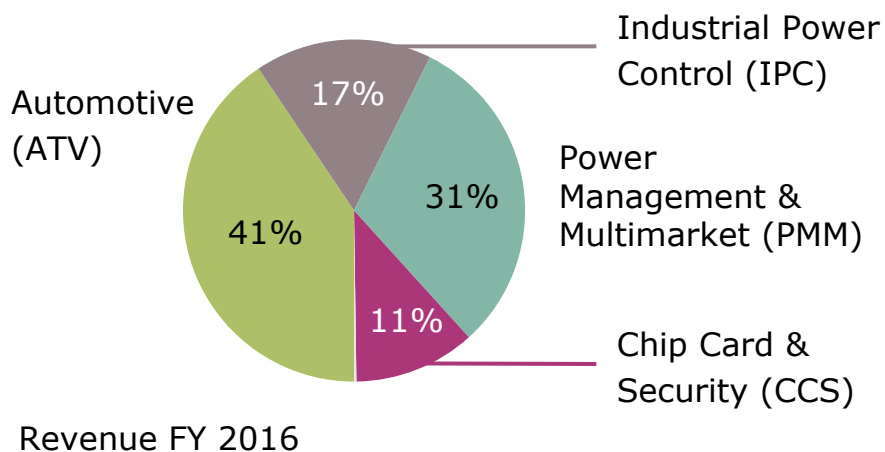


eluminocity



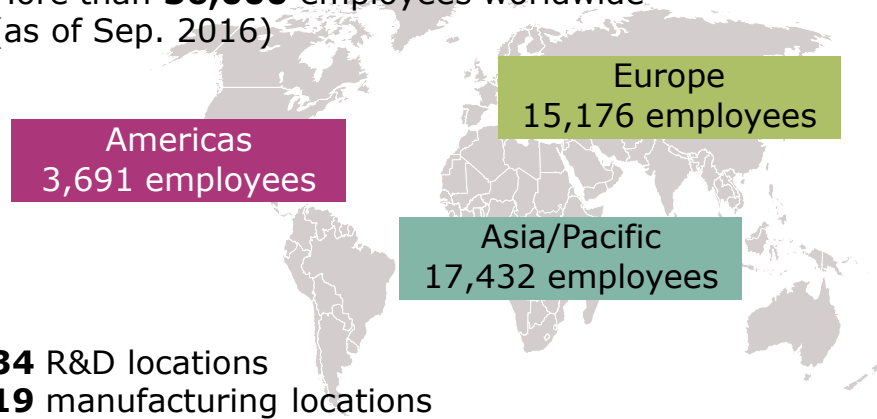
# Infineon at a glance

## Business Segments

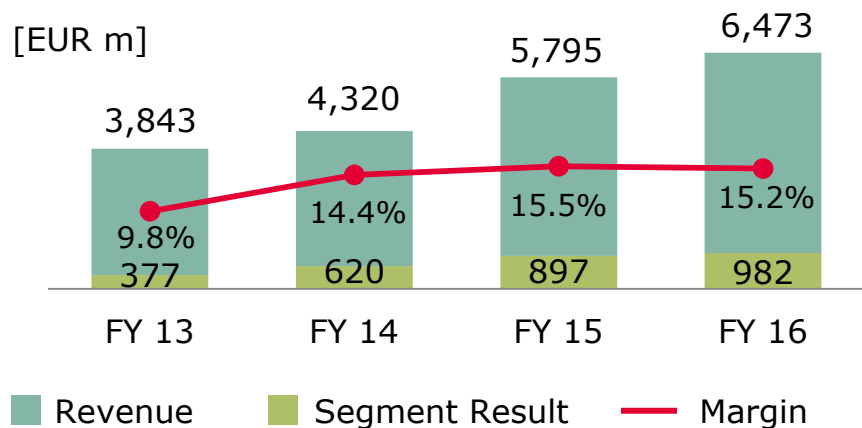


## Employees

More than **36,000** employees worldwide (as of Sep. 2016)



## Financials



## Market Position



# Smart Street Lighting from Infineon and our Partners



What is so special about the Smart Street Lighting that we offer together with our partners?



Red flashing light to warn both driver and pedestrian that vehicle is travelling too fast





# Value added services solve future urban challenges



# Infineon, Intel and eluminocity

## Enabling secure and connected city streets



**Market growth**  
**>35%\***



**Partnering** with  
solution provider,  
connectivity and SW  
security company



**Infineon products:**  
radar sensors,  
power semiconductors,  
microcontrollers and  
security chips

\*Market potential in 2020: 1.7 bn shipments

### eluminocity

Leading system integration,  
data analytics, application  
solutions



Leading radar, sensor,  
power and embedded  
security solutions

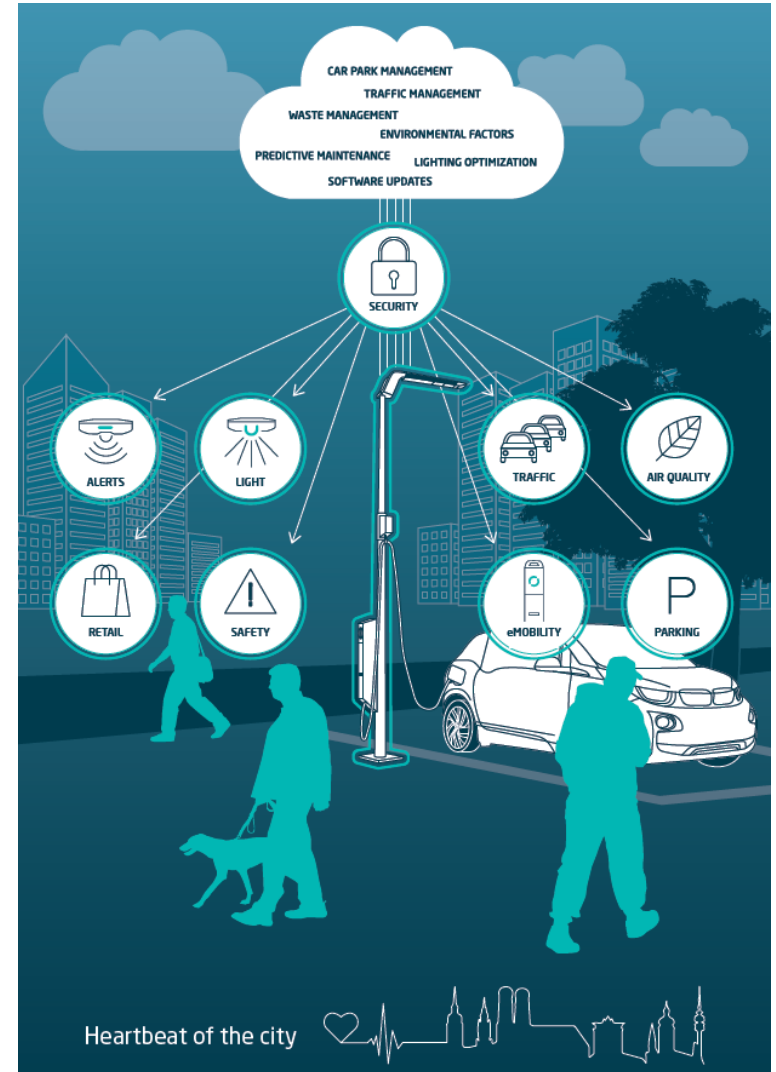
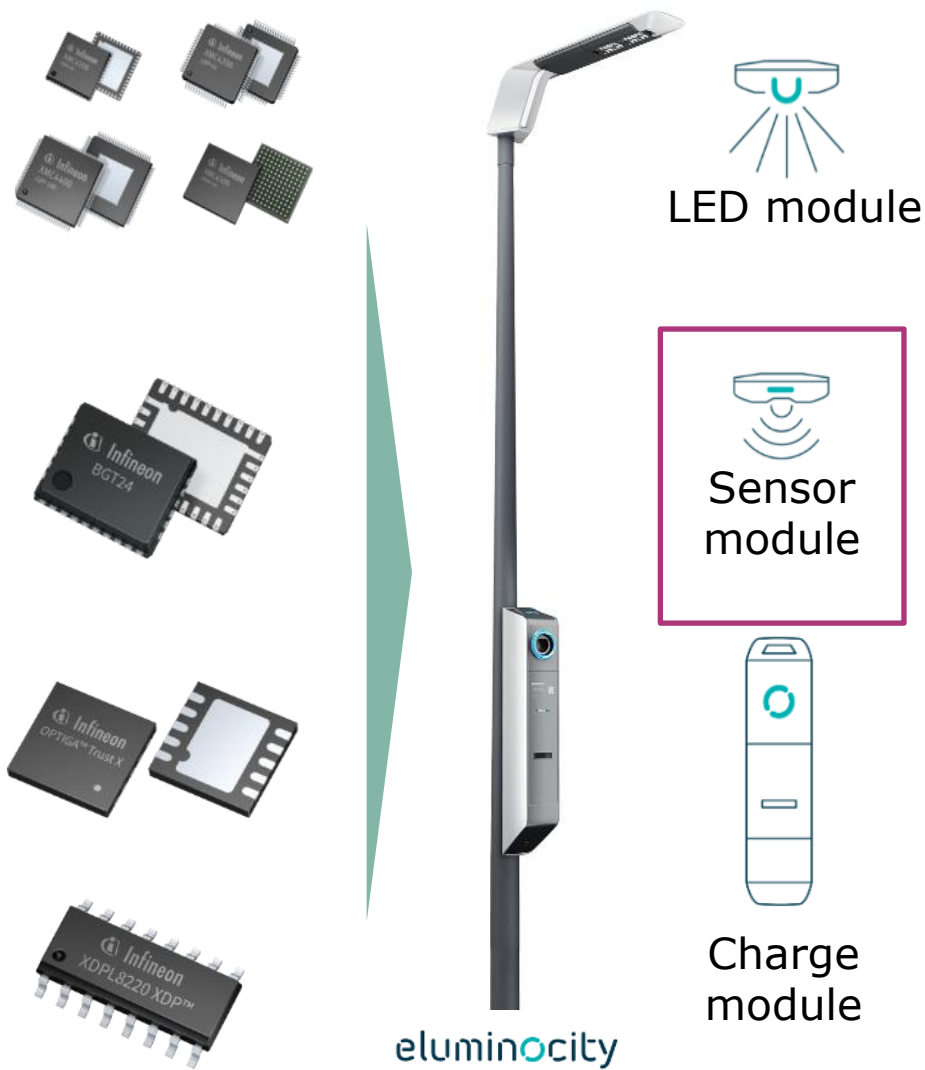


Leading connectivity,  
processing & cloud  
solutions





# From product to system: an intelligent streetlight for smart cities



# Infineon provides advanced radar and sensor systems



## Radar sensor hub



### **Radar system for smart city applications:**

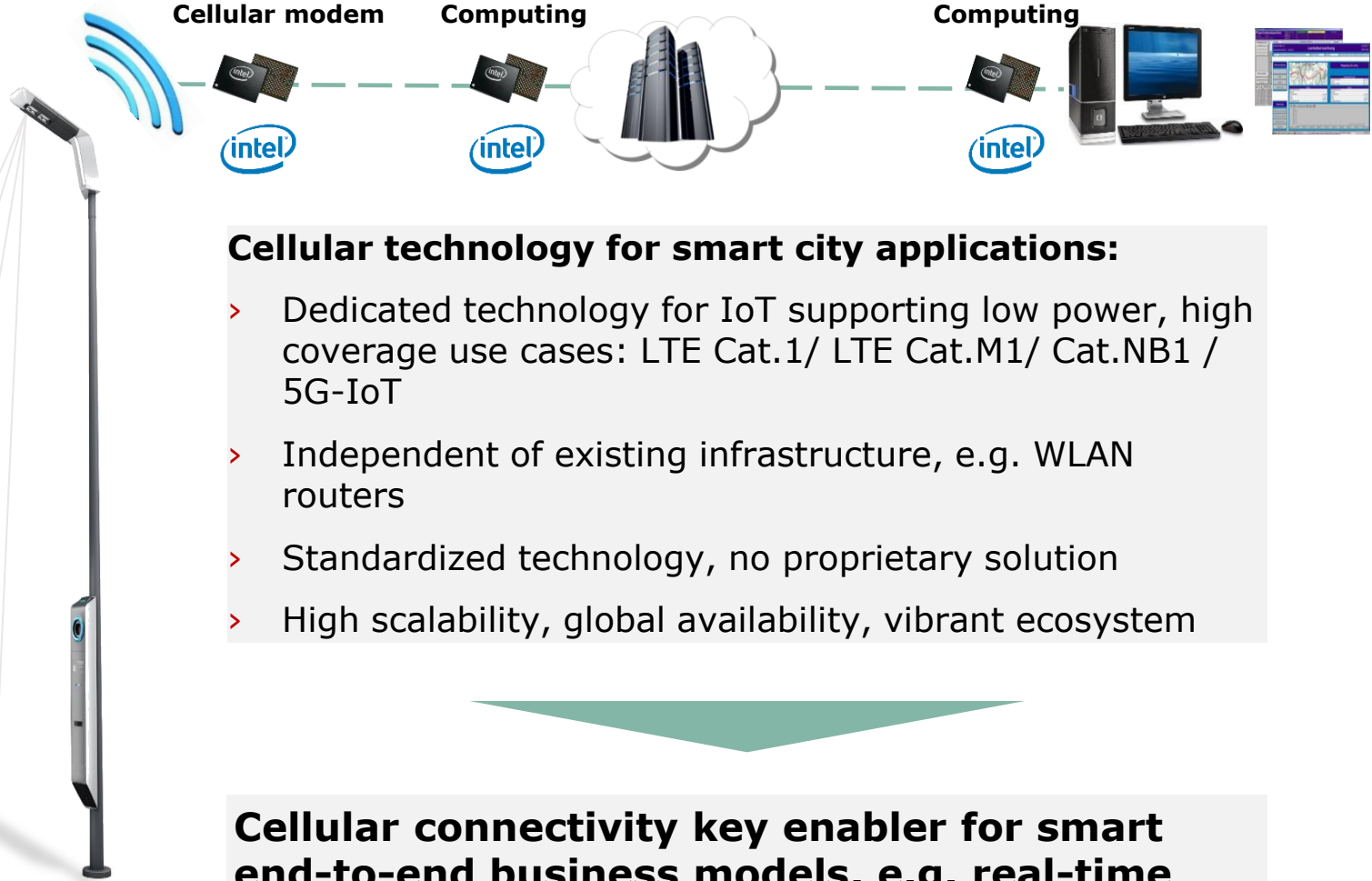
- > Ideal for detecting distance, direction, speed and type of objects
- > Long range (up to 100 m), high resolution ( $\sim$ mm range)
- > Independent of weather and atmospheric conditions
- > No privacy issues (e.g. vs. camera)
- > Flexible mounting options, penetrates a variety of materials



**Radar information enables a variety of use cases for smart city applications, e.g. light control, parking, security, traffic, retail**



# Intel provides advanced connectivity and cloud computing

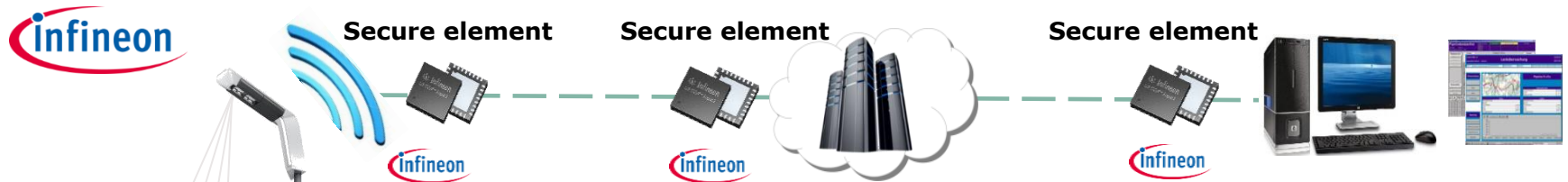


## Cellular technology for smart city applications:

- > Dedicated technology for IoT supporting low power, high coverage use cases: LTE Cat.1/ LTE Cat.M1/ Cat.NB1 / 5G-IoT
- > Independent of existing infrastructure, e.g. WLAN routers
- > Standardized technology, no proprietary solution
- > High scalability, global availability, vibrant ecosystem

**Cellular connectivity key enabler for smart end-to-end business models, e.g. real-time monitoring & control, over-the-air updates**

# Infineon provides leading end-to-end embedded security solution

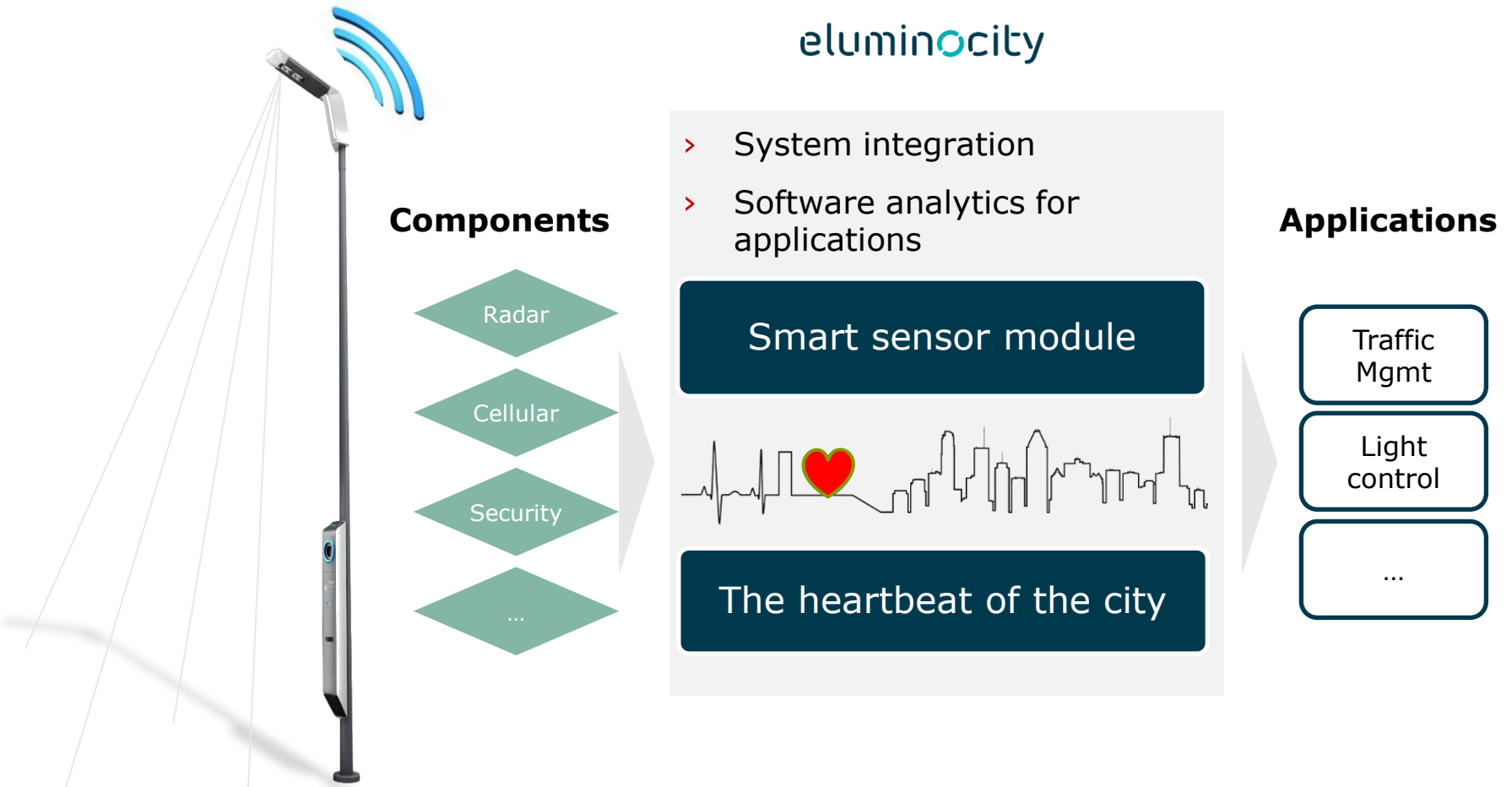


## End-to-end security solution:

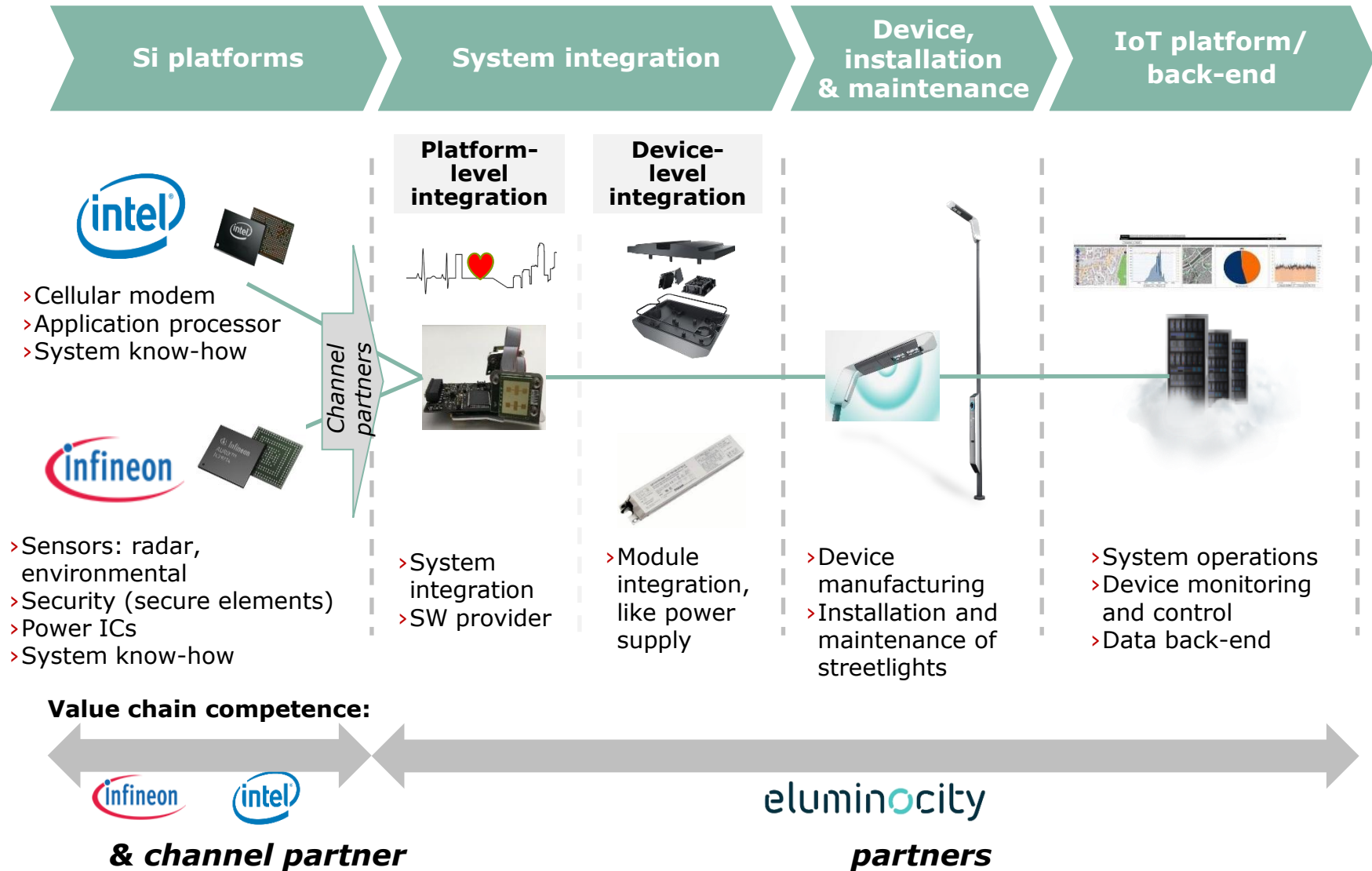
- > Secure elements across the entire value chain (edge – cloud – client device) for highest degree of security
- > Authentication, data integrity, encryption, platform integrity
- > Certified solution (HW)
- > Standardized technology (HW), no proprietary solution

**End-to-end solution enables highest levels of security for secure encryption and authentication**

# eluminocity provides an uniquely integrated smart sensor module



# Value chain: leading components, unique integration, end-to-end solution possible







Part of your life. Part of tomorrow.

